

COMPOSITE DECKING INSTRUCTION MANUAL

CONTENTS

Introduction	1
Tools and Components	2
Preparation and Formation	3
Steps 1 - 3	4
Steps 4 - 5 and Details	5

JOIST CONFIGURATIONS

Specification of timber joists required on all decks:

For residential installation sizes can be used in accordance with AS1684 - Residential Timber Framed Construction.

Box Construction

Ideal for garden area that drains well.

- Replace 100mm topsoil with compacted down gravel or hardcore.
- Position a minimum of 2 deck support posts in footings to act as frame anchors.
- Lay weed barrier.
- Lay tanalised timber sub-frame allowing for 50mm drainage gap all round and drainage gradient of 1:80 (1.5%) as standard.
- Attach to post anchors then backfill frame with gravel or pea shingle.

Raised Deck Construction

Ideal for sloping sites, multi-tier decks or where final deck height is not an issue.

- Install tanalised timber sub-frame allowing for 50mm drainage gap all round and drainage gradient of 1:80 (1.5%) as standard.
- Lateral bracing of the beams may be necessary.

Low Level Construction

Ideal for restricted final deck height.

- Install tanalised timber sub-frame allowing for 50mm drainage gap all round and drainage gradient of 1:80 (1.5%) as standard.
- Ensure suitable ventilation is available.
- Deck support posts are either supported in 'U' propriety, brackets (on footing) or supported in a footing. Joists are attached to beams using mini joist hangers.

Construction Over Existing Patio

Ideal only when existing structurally sound concrete slab is present.

- We do not recommend using existing patio slabs as a base as they tend to subside causing problems later. If you do not know what is under the slabs it is better to pull them up and **relay for peace tanalised**
- Install tanalised timber sub-frame allowing for 50mm drainage gap all around and drainage gradient of 1:80 (1.5%) as standard.
- Joists are supported off the slabs using strong angle brackets and durable packing pieces.

TOOLS AND PRODUCTS REQUIRED FOR INSTALLATION

TOOLS

The following list of tools is required and recommended in order for the building process to flow and avoid any interruptions or mistakes. Please take a moment to check through the list and tick off requirements.

- Cordless Drill or Screwdriver
- Screwdriver Bit suitable for a 4.2 mm diameter screw
- Circular Saw and Gate
- Spirit Level
- Tape Measure
- Pencil
- Chalk Line
- Safety Gloves
- Safety Glasses
- Dust Mask
- Hearing Protection



PRODUCTS

The following list of items are included in your BRITE deck product package. Each component is crucial, if you are missing anything listed please contact us prior to installation.

- Composite Deck Boards (A)
- Starter Clips (B)
- Nylon Concealed Clips (C)
 - for 88 mm i.e. Narrower Boards

OR

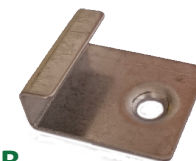
- Nylon Concealed Fixing Clips (D)
 - for 150 mm i.e. Wider Boards
- End Caps (E)

OPTIONAL EXTRAS - Ordered Separately

- Fascia - 96 mm (W) x 11 mm (T) x 2.9 mtr (L) (F)
 - Available for all colours
- Screening - 70 mm (W) x 19 mm (T) x 5.4 mtr (L) (D)
 - Available in Grey and Copper Brown



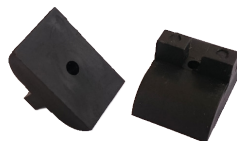
A



B



C



D



E

All work practices must be carried out to current Work, Health and Safety practices.
If unsure - please research current rules and regulations.

PREPARATION, LAYOUT AND CLIP FORMATION

PREPARATION

Ground should be cleared from plants and vegetation prior to sub-frame installation. Standard recommendations such as a concrete base or compacted gravel or hardcore is suitable for solid foundation as it allows for drainage.

Note: Please contact your local builder for expert advice in order to build safely and correct to industry standards, prior to sub-frame installation.

LAYOUT (JOIST CENTERS)

BRITE deck should be installed centre to centre as stated;

Wider Boards - 150mm: 450 mm Joist Centres

Narrow Boards - 88mm: 400 mm Joist Centres

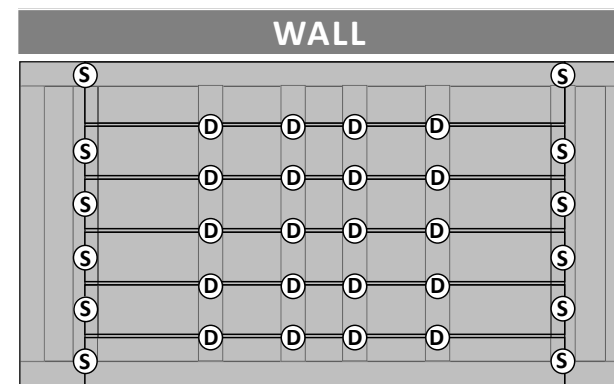
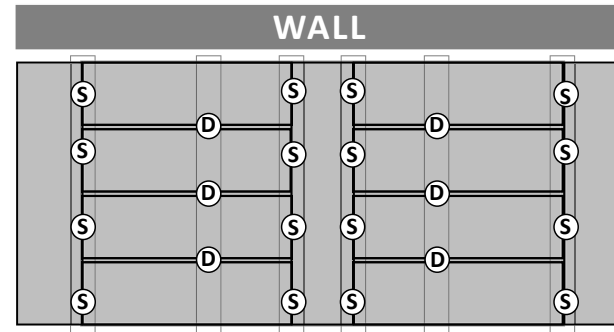
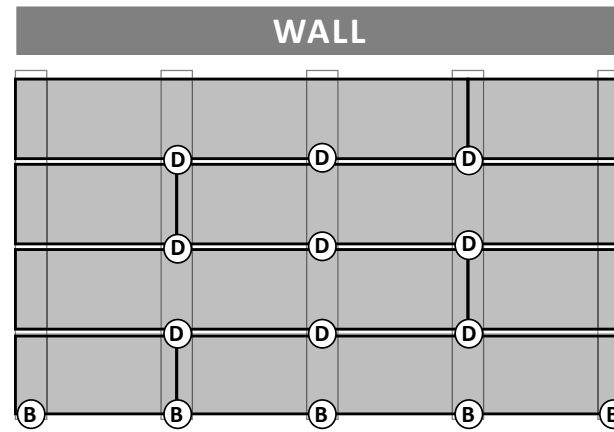
CLIP FORMATION

Decide on a formation prior to deck installation in order to achieve desired design. Consider expansion for composite decks. Contact our office for any advice before commencing the project.

Note: Decks up to 5.3m in width should be laid out in standard order. For decks wider than 5.3m, one of the following layouts are required.

- | | |
|-------------------|--|
| CLIP TYPES | (B) Starter Clips |
| | (C) Nylon Concealed Clips |
| | (S) Stainless Steel Screws |
| | - For Wooden or Steel frame
- Request for the right screw depending on the frame |

Total length of deck should have slight gradient - 1:80 (1.5%) to achieve run-off.



STAGGERED

Start at the front of the board and work back towards a wall -

- Use fascia

OR

- No Fascia, Square off front, sand down and silicone board.

BREAKER BOARD

Start at the front of the board and work back towards a wall -

- Use fascia

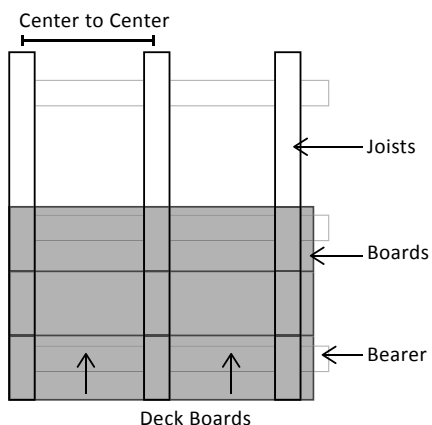
Note: Screws should be drilled into breaker board through to joist.

FRAME CONSTRUCTION

Starter clips (B) should be drilled into outside of perimeter of frame.

Note: Screws should be drilled into boards running parallel with joists.

STEPS 1 - 4



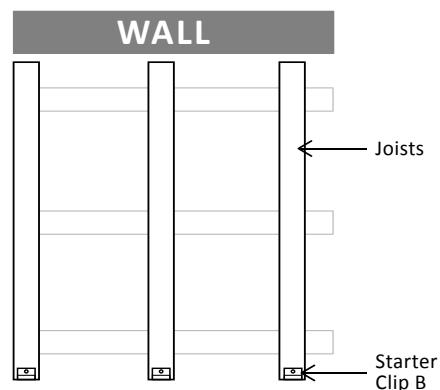
STEP 1

Ground work should be prepared prior to fitting BRITE composite deck to sub-frame. Building regulations and BRITE deck require the support to have drainage gradient of 1:80 (1.5%) for water 'run off'. Lay joists as required center to center (*refer to LAYOUT on previous page*) running opposite way of intended deck board direction.

Note:

For expansion reasons a 10mm gap should be between deck and any walls, fencing, planter boxes etc. (See detail 1b)

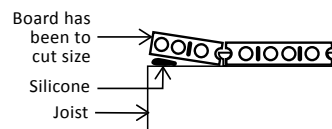
Ensure cross ventilation is allowed around and under the decking



STEP 2

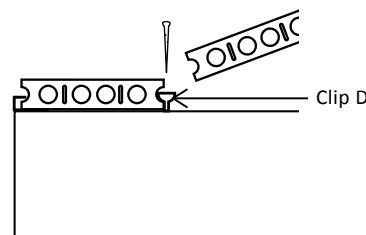
Determine which side of the frame to begin - *It is recommended to begin at the end of the deck furthest from wall.* Fix starter clips (B) into the edge of joists then screw into place (See detail 2b). Push first board into place.

OR For no fascia, square off the board edging, sand down and silicone in place. Drill screw into board and joist or drill from underneath decking.



Note:

Cut board for edging and sand down if needed for fit. (Refer to video)



STEP 3

Concealed fixing clips (D) must be tucked into the aisle and pre-drilled into joist. Do not screw into place until next board has been laid out along side, with the clip (D) between boards.

Note:

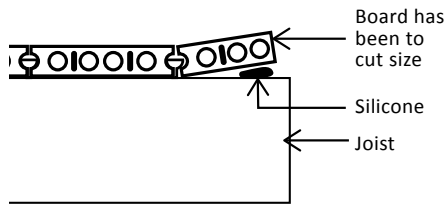
Space between board widths will be 5mm as set by deck clip.

Do not leave decks overhanging without support for more than 50mm as they may be subject to movement or damage.

Note:

Leave a small gap calculated on the expansion rate of 0.3% - 0.5% of the board length for reasons of expansion and movement.

STEP 5 & 6 & DETAILS

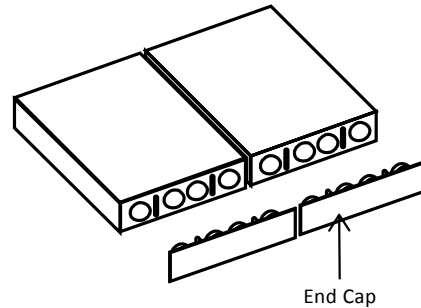


STEP 4

Measure the width of the last board and mark the joist at the end of the deck then place silicone on joists. Push final board into previous board (Clip D) then down onto the silicone.

Note:
Cut board for any power outlets/cords or pipes.

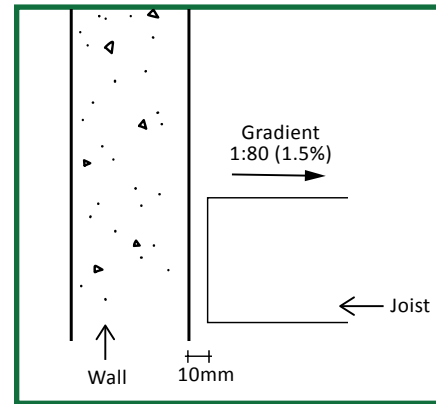
Drill screw into board and joist or drill from underneath decking.



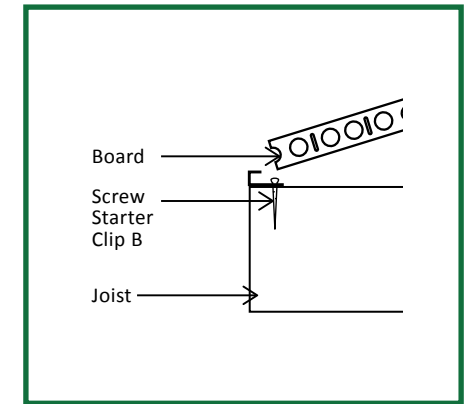
STEP 5

For End Cap (F) And Fascia (G):
Align fascia with the length edge of the BRITE deck board and push into place.

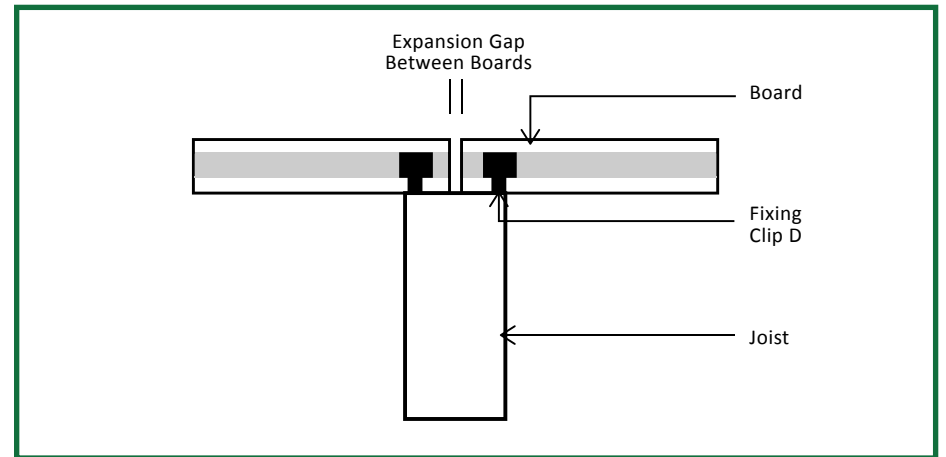
Note:
Double check and drill any clips you may have missed.



Detail 1b



Detail 2b



Detail 4b

MAINTENANCE

Use brush and hot soapy water to wash BRITE composite WPC. For water stains, marks caused by birds, berries or leaves, use soft cleaning detergent to wash off. For hard stains containing dyes that leave permanent stains, apply OMO (Powder) for 24 hours - repeat if necessary. If using a power washer to clean your product, keep a distance of at least 30cm from the boards. Do not use solvent based materials on BRITE composite WPC. Do not stain, oil or paint any BRITE composite decks without guidance. Contact head office for more information.